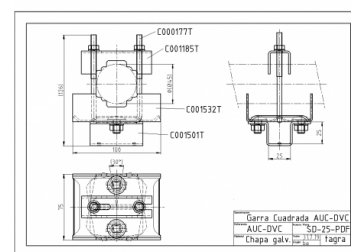
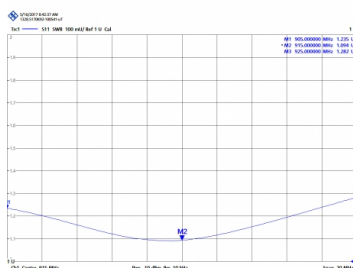


TMX-900/3 - YAGI GSM ANTENNA 860-960 MHz



Elements	3
Power	200W
Gain	6 dBd (8,21 dBi)
Impedance	50 ohm
Material	Anodized aluminum QUALANOD certificate
R.O.E - S.W.R - T.O.S	1,5:1
Type mounting	Mast 0,030-0,045 m
Connector type	Female N connector
Polarization	Vertical and horizontal
Adjust type	Gamma Match
Support	Included
Element lenght	0,046 m
Length	0,46 m
Weight	0,41 kg
Package dimensions	0,3 x 0,3 x 0,1 m



All specifications are subject to change without notice.

