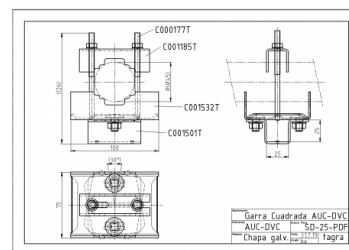
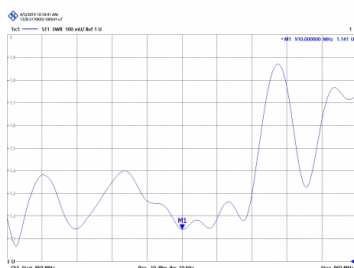


TMX-900/15 - YAGI GSM ANTENNA 860-960 MHz



Elements	12
Power	200W
Gain	15 dBd (17,15 dBi)
Impedance	50 ohm
Material	Anodized aluminum QUALANOD certificate
R.O.E - S.W.R - T.O.S	1,5:1
Type mounting	Mast 0,030-0,045 m
Connector type	Female N connector
Polarization	Vertical and horizontal
Adjust type	Gamma Match
Support	Included
Element lenght	0,035 m
Length	1,15 m
Weight	1,20 kg
Package dimensions	1,2 x 0,2 x 0,1 m



All specifications are subject to change without notice.

