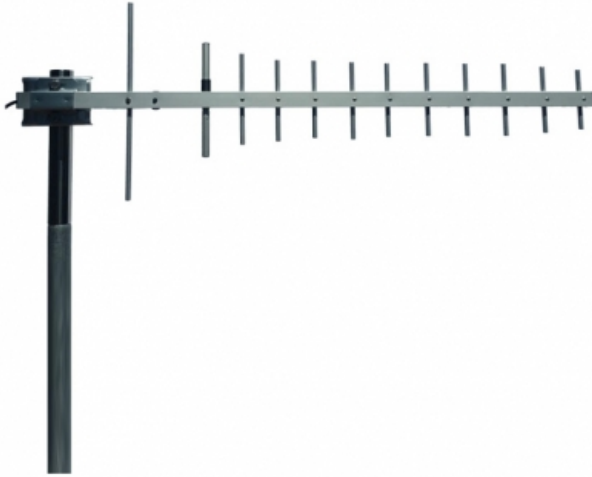
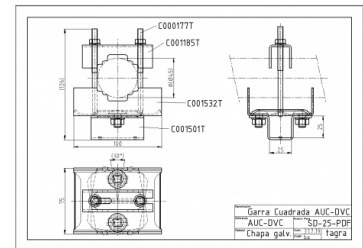
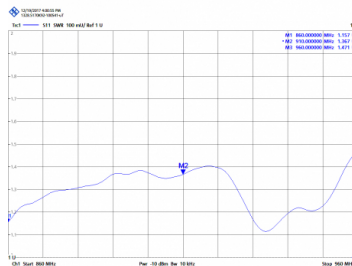


TMX-900/12 - YAGI GSM ANTENNA 860-960 MHz



| | |
|-----------------------|---|
| Elements | 12 |
| Power | 200W |
| Gain | 13,5 dBd (15,65 dBi) |
| Impedance | 50 ohm |
| Material | Anodized aluminum QUALANOD certificate |
| R.O.E - S.W.R - T.O.S | 1,5:1 |
| Type mounting | Mast 0,030-0,045 m |
| Connector type | Female N connector |
| Polarization | Vertical and horizontal |
| Adjust type | Gamma Match |
| Support | Included |
| Element lenght | 0,035 m |
| Length | 0,90 m |
| Weight | 1,05 kg |
| Package dimensions | 1,0 x 0,2 x 0,1 m |



All specifications are subject to change without notice.

