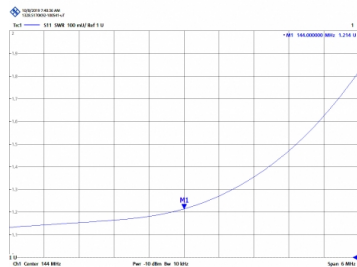
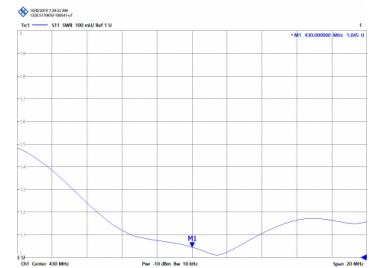




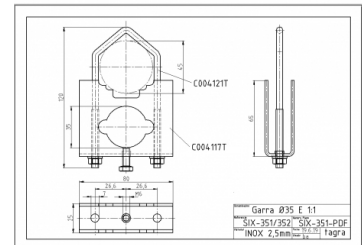
**KAD-BIBANDA - OMNI DUAL BAND ANTENNA  
VHF/UHF 144/430 MHz**

Power	500W
Gain	144 (6 dBi) 430 (8 dBi)
Impedance	50 ohm
Material	Glass fiber
R.O.E - S.W.R - T.O.S	1,2:1
Connector type	Female N connector
Polarization	Vertical
Wind load	180 km/h
Temperature (°C)	from -40º to 60º
Adjust type	Adjusted
Mastil diameter	0,030-0,045 m
Support	Included
Length	2,65 m
Weight	2,90 kg
Package dimensions	2,7 x 0,1 x 0,1 m

Tube and support in INOX



NO INCLUIDO



All specifications are subject to change without notice.

