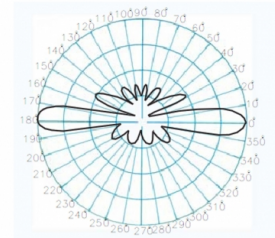




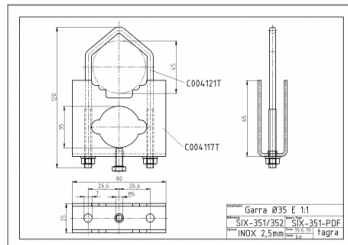
Tube and support in INOX

**KAD-430 - OMNI ANTENNA UHF 420-440 MHz**

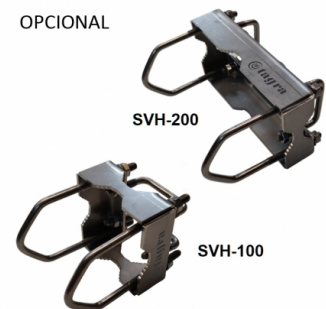
Type	<b>Double dipole colinear</b>
Power	<b>500W</b>
Gain	<b>5.5 dBd (7.65 dBi)</b>
Impedance	<b>50 ohm</b>
Material	<b>Fiber</b>
R.O.E - S.W.R - T.O.S	<b>1,2:1</b>
Connector type	<b>Female N connector</b>
Polarization	<b>Vertical</b>
Wind load	<b>180 km/h</b>
Temperature (°C)	<b>from -40° to 60°</b>
Adjust type	<b>Adjusted</b>
Mastil diameter	<b>0,030-0,045 m</b>
Support	<b>Included SIX-352</b>
Cable type	<b>RG-213</b>
Length	<b>2,65 m</b>
Weight	<b>1,48 kg</b>
Package dimensions	<b>2,7 x 0,1 x 0,1 m</b>
Weight with package	<b>2,64 kg</b>
Included products	<b>SIX-352</b>



NO INCLUIDO



OPCIONAL



All specifications are subject to change without notice.

