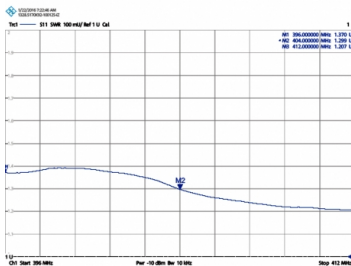
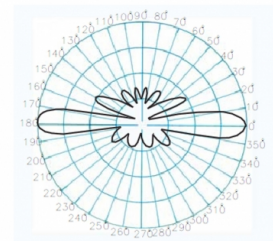




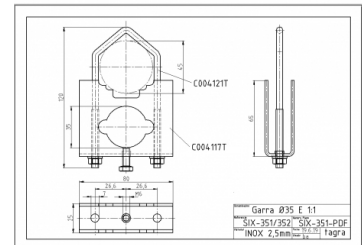
Tube and support in INOX

KAD-400 - OMNI ANTENNA UHF 396-412 MHz

Type	Double dipole colinear
Power	500W
Gain	5.5 dBd (7.65 dBi)
Impedance	50 ohm
Material	Fiber
R.O.E - S.W.R - T.O.S	1,2:1
Connector type	Female N connector
Polarization	Vertical
Wind load	180 km/h
Temperature (°C)	from -40° to 60°
Adjust type	Adjusted
Mastil diameter	0,030-0,045 m
Support	Included SIX-352
Cable type	RG-213
Length	2,65 m
Weight	1,48 kg
Package dimensions	2,7 x 0,1 x 0,1 m
Weight with package	2,64 kg
Included products	SIX-352



NO INCLUIDO



All specifications are subject to change without notice.

