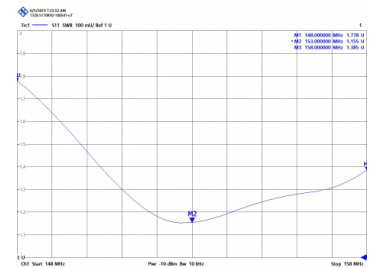




KAD-155 - OMNI ANTENNA VHF 148-158 MHz

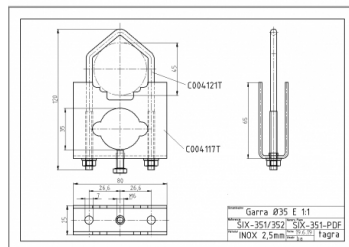
| | |
|-----------------------|--------------------|
| Power | 500W |
| Gain | 3,5 dBd (5,65 dBi) |
| Impedance | 50 ohm |
| Material | Fiber |
| R.O.E - S.W.R - T.O.S | 1,2:1 |
| Connector type | Female N connector |
| Polarization | Vertical |
| Wind load | 180 km/h |
| Temperature (°C) | from -40º to 60º |
| Adjust type | Adjusted |
| Mastil diameter | 0,030-0,045 m |
| Support | Included SIX-352 |
| Length | 2,65 m |
| Weight | 1,48 kg |
| Package dimensions | 2,7 x 0,1 x 0,1 m |
| Weight with package | 2,64 kg |
| Included products | SIX-352 |

Tube and support in INOX

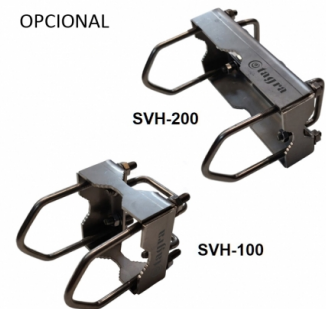


FREQUENCY TABLE

NO INCLUIDO



OPCIONAL



All specifications are subject to change without notice.