



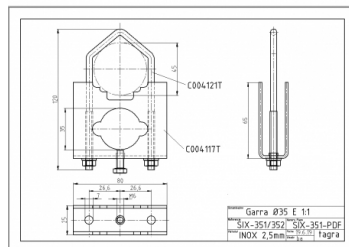
**KAD-150 - OMNI ANTENNA VHF 142-152 MHz**

Power	500W
Gain	3,5 dBd (5,65 dBi)
Impedance	50 ohm
Material	Fiber
R.O.E - S.W.R - T.O.S	1,2:1
Connector type	Female N connector
Polarization	Vertical
Wind load	180 km/h
Temperature (°C)	from -40º to 60º
Adjust type	Adjusted
Mastil diameter	0,030-0,045 mv
Support	Included SIX-352
Length	2,65 m
Weight	1,48 kg
Package dimensions	2,7 x 0,1 x 0,1 m
Weight with package	2,64 kg
Included products	SIX-352

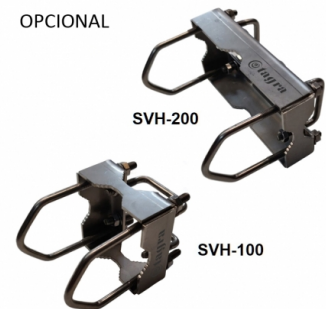
Tube and support in INOX



NO INCLUIDO



OPCIONAL



All specifications are subject to change without notice.

