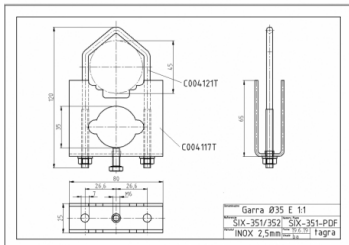
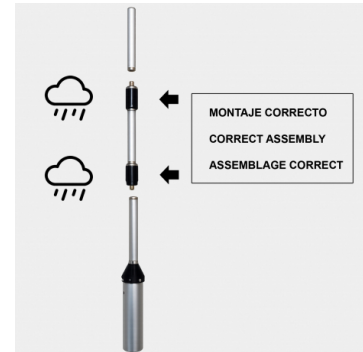


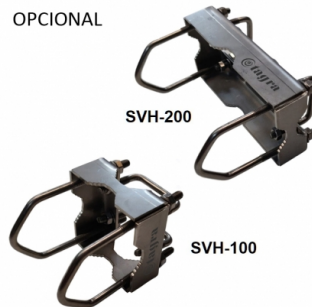
GPC-900/7 - OMNI GSM ANTENNA 870-970 MHz



Type	Ground plane
Power	125 W
Gain	7dBd (9,15dBi)
Impedance	50 ohm
R.O.E - S.W.R - T.O.S	1,5:1
Type mounting	Mast 0,030-0,045 m
Connector type	Female N connector
Radiator length	0,14 m
Polarization	Vertical
Adjust type	Adjusted
Support	Included
Radial length	0,55 m
Length	0,55 m
Weight	0,75 kg



OPCIONAL



All specifications are subject to change without notice.

