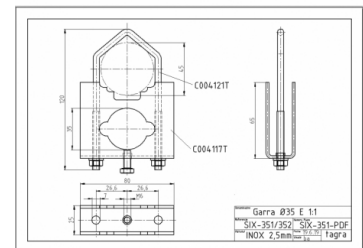
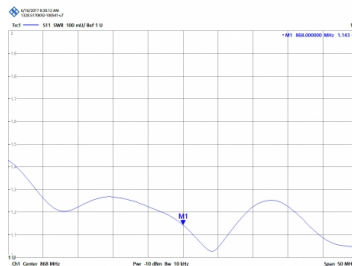


GP-868 - OMNI GSM ANTENNA 868 MHz



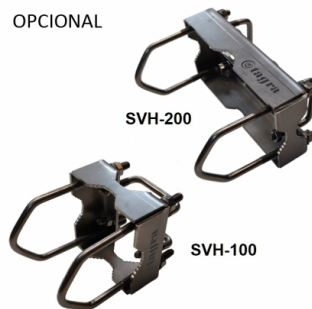
Type	Ground plane 5/8
Power	125 W
Gain	3 dBd (5,15 dBi)
Impedance	50 ohm
Material	Aluminum
R.O.E - S.W.R - T.O.S	1,3:1
Type mounting	Mast 0,030-0,045 m
Connector type	Female N connector
Radiator length	0,14 m
Polarization	Vertical
Adjust type	Adjusted
Support	Included
Radial length	0,065 m
Length	0,14 m
Weight	0,45 kg



NO INCLUIDO



OPCIONAL



All specifications are subject to change without notice.

