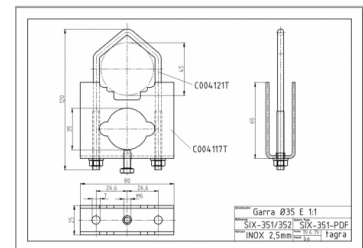
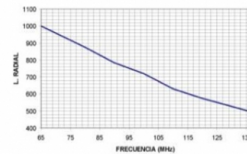
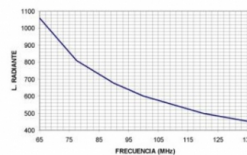


GP-80 - OMNI ANTENNA BASE VHF 65-136 MHz



Type	Ground plane 1/4
Power	200W
Gain	0 dBd (2,15 dBi)
Impedance	50 ohm
Material	Aluminum
R.O.E - S.W.R - T.O.S	1,2:1
Type mounting	Mast 0,030-0,045 m
Connector type	PL connector
Radiator lenght	1,06 m
Polarization	Vertical
Adjust type	Adjusted
Support	Included
Radial length	1 m
Length	1,06 m
Weight	1,86 kg
Package dimensions	1,4 x 0,1 x 0,1 m

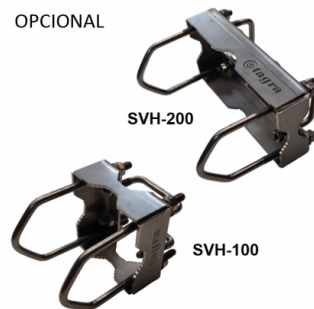


Radiant cutting chart

NO INCLUIDO



OPCIONAL



All specifications are subject to change without notice.

