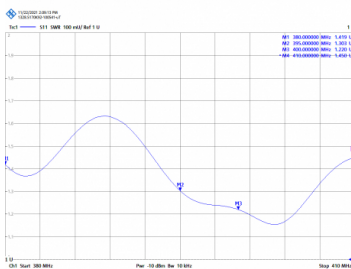
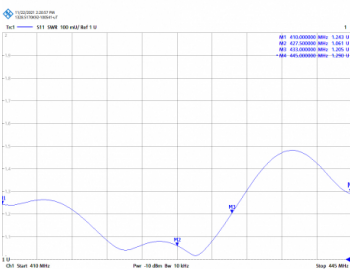
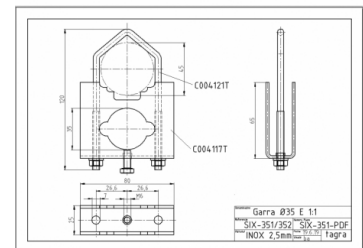
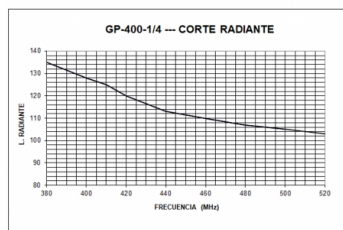
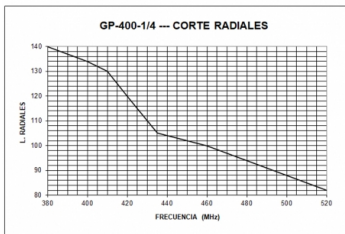




**GP-400-1/4 - OMNI ANTENNA BASE UHF
380-445 MHz**

Type	1/4
Power	150W
Gain	0 dBd (2,15 dBi)
Impedance	50 ohm
Material	Aluminum
R.O.E - S.W.R - T.O.S	1,2:1
Type mounting	Mast 0,030-0,045 m
Connector type	Connector N female
Radiator length	0,135 m
Polarization	Vertical
Temperature (°C)	from -40° to 55°
Adjust type	Adjusted
Support	Included
Radial length	0,14 m
Length	0,15 m
Weight	0,40 kg



NO INCLUIDO



All specifications are subject to change without notice.

