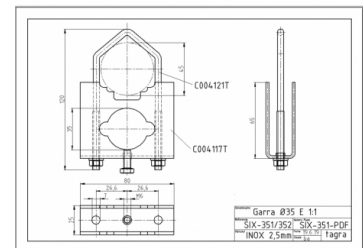
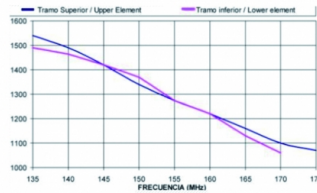


GP-2MTB - OMNI ANTENNA BASE VHF 136-174 MHz

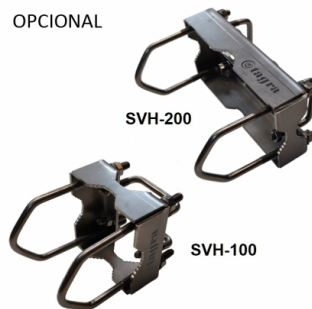
Type	Ground plane 5/8
Power	200W
Gain	5,5 dBd (7,65 dBi)
Impedance	50 ohm
Material	Aluminum
R.O.E - S.W.R - T.O.S	1,2:1
Type mounting	Mast 0,030-0,045 m
Connector type	Connector PL
Radiator length	3,03 m
Polarization	Vertical
Temperature (°C)	from -40° to 55°
Adjust type	Adjusted
Support	Included
Radial length	0,49 m
Length	3,03 m
Weight	1,38 kg
Package dimensions	1,2 x 0,1 x 0,1 m



NO INCLUIDO



OPCIONAL



All specifications are subject to change without notice.

