

**GP-144-1/4 - OMNI ANTENNA BASE VHF
136-174 MHz**

| | |
|-----------------------|--------------------|
| Type | Ground plane 1/4 |
| Power | 500W |
| Gain | 0 dBd (2,15 dBi) |
| Impedance | 50 ohm |
| Material | Aluminum |
| R.O.E - S.W.R - T.O.S | 1,2:1 |
| Type mounting | Mast 0,030-0,045 m |
| Connector type | Connector PL |
| Radiator length | 0,60 m |
| Polarization | Vertical |
| Temperature (°C) | from -40° to 55° |
| Adjust type | Adjusted |
| Support | Included |
| Radial length | 0,32 m |
| Length | 0,60 m |
| Weight | 0,92 kg |
| Package dimensions | 0,8 x 0,1 x 0,1 m |



Tabla de corte del radiante

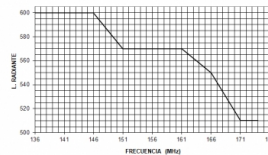
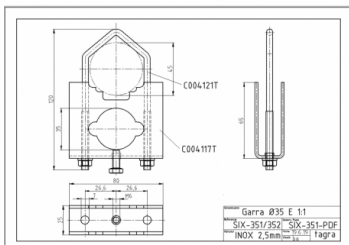
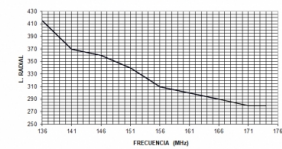


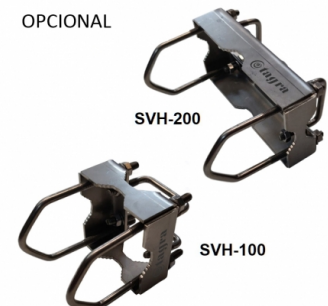
Tabla de corte del radial



NO INCLUIDO



OPCIONAL



All specifications are subject to change without notice.

