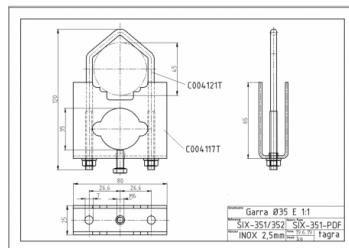


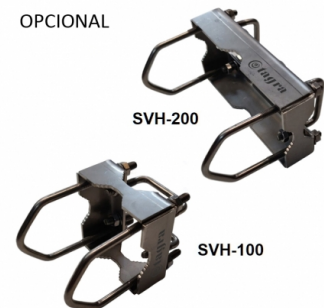
GP-121-5/8 - OMNI ANTENNA BASE VHF 121 +/- 5 MHz



Type	Ground plane 5/8
Power	300W
Gain	3,5 dBd (5,15dBi)
Impedance	50 ohm
Material	Aluminum
R.O.E - S.W.R - T.O.S	1,2:1
Type mounting	Mast 0,030-0,045 m
Connector type	Connector PL
Radiator length	1,64 m
Polarization	Vertical
Support	Incluido
Radial length	0,55 m
Length	1,65 m
Weight	1,30 kg



OPCIONAL



All specifications are subject to change without notice.

