

FMD-2 - YAGI ANTENNA 2 ELEMENTS VHF LOW BAND 88-108 MHz

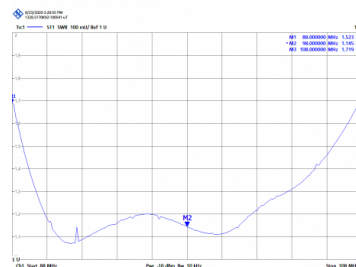
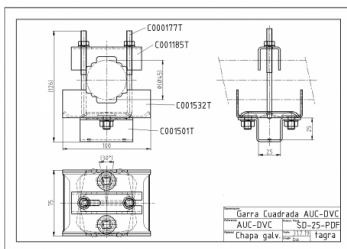


Type	Yagi directive
Elements	2
Power	200W
Gain	3 dBd (5,15 dBi)
Impedance	50 ohm
Material	Anodized aluminum
R.O.E - S.W.R - T.O.S	1,5:1
Connector type	Female N connector
Radiator length	1,64 m
Electrical protection	Yes
Polarization	Vertical & Horizontal
Adjust type	Gamma match
Mastil diameter	0,025-0,045 m
Support	Included
Length	1,00 m
Weight	1,50 kg



Horizontal and vertical polarization

Accomplish mounting the antenna securing that fixation of several parts have been properly tightened, in order to avoid future troubles mechanical or electrical nature.



All specifications are subject to change without notice.

