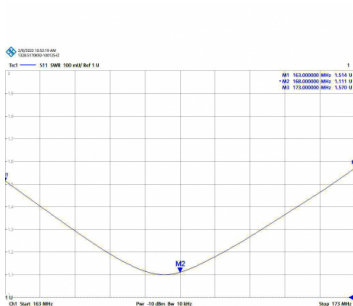
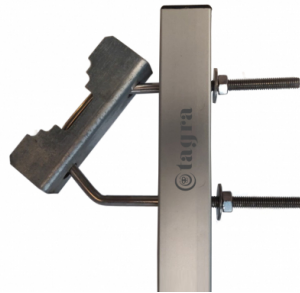
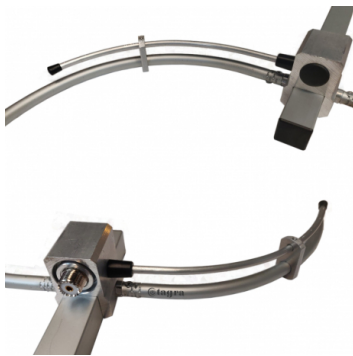




**DVR-C - DIPOLE HALO TYPE ANTENNA 1 ELEMENT VHF 160-174 MHz**

Type	Dipole1/2
Elements	1
Power	200W
Gain	0 dBd (2,15 dBi)
Impedance	50 ohm
Material	Anodized aluminum QUALANOD certificate and stainless steel
R.O.E - S.W.R - T.O.S	1,2:1
Connector type	UHF (PL)
Electrical protection	Yes
Polarization	Vertical & Horizontal
Wind load	180 km/h
Temperature (°C)	from -10° to 50°
Adjust type	Dipolo Gamma Match
Mastil diameter	0,025-0,045 m
Support	Included
Length	0,70 m
Weight	0,50 kg
Package dimensions	0,4 x 0,4 x 0,2 m



All specifications are subject to change without notice.