

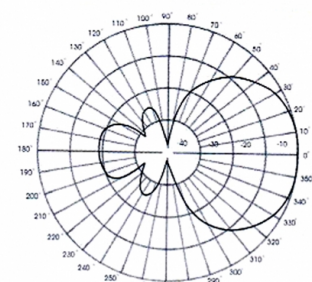


**DVC-6CN - YAGI ANTENNA 6 ELEMENTS VHF NH
160-174 MHz**

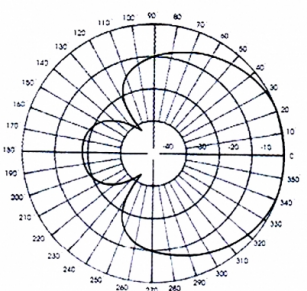
Elements	6
Power	500W
Gain	10 dBd (12,15 dBi)
Impedance	50 ohm
Material	Anodized aluminum QUALANOD certificate
R.O.E - S.W.R - T.O.S	1,5:1
Connector type	N (FEMALE)
Radiator length	2 m
Electrical protection	Yes
Polarization	Vertical & Horizontal
Wind load	180 km/h
Temperature (°C)	from -10° to 50°
Adjust type	Dipolo Gamma match
Rel. front/back	16 dB
Mast diameter	0,030-0,045 m
Support	Included
Element length	0,96 m
Length	2,00 m
Weight	2,60 kg
Package dimensions	2,2 x 0,1 x 0,1 m



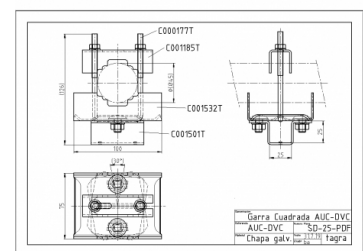
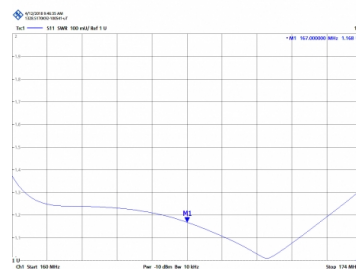
Support and connector view



Vertical radiation pattern



Horizontal radiation pattern



All specifications are subject to change without notice.

