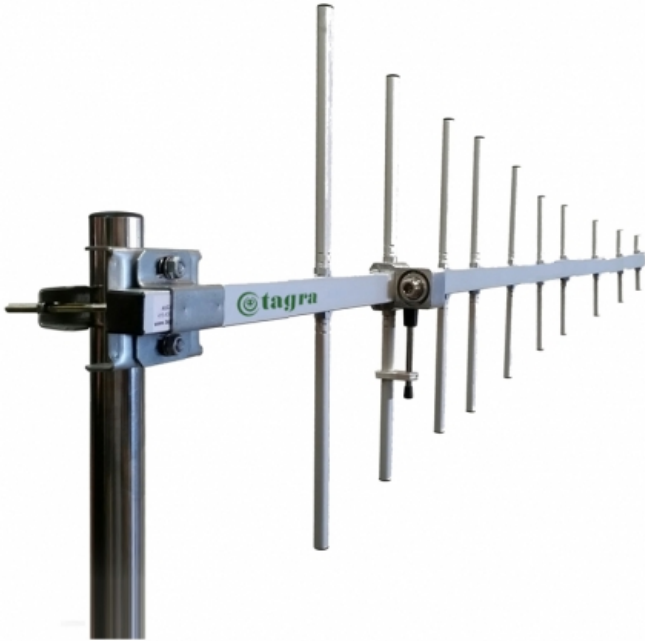
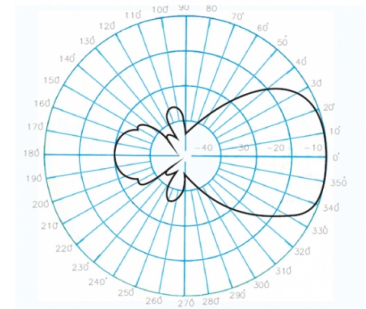


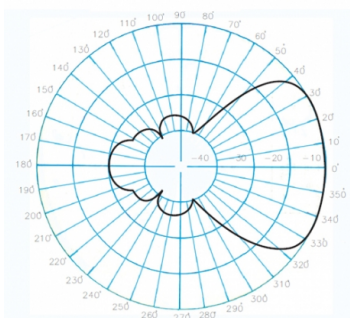
AUC-10D - YAGI ANTENNA 10 ELEMENTS UHF  
445-460 MHZ



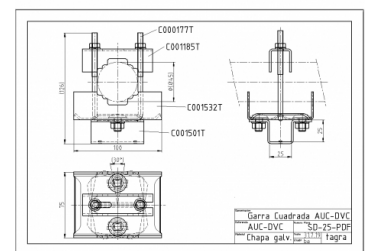
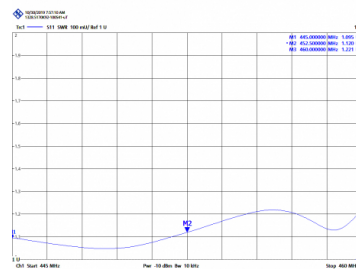
Type	Yagi directive
Elements	10
Power	500W
Gain	12 dBd (14,15 dBi)
Impedance	50 ohm
Material	Anodized aluminum QUALANOD certificate
R.O.E - S.W.R - T.O.S	1,5:1
Connector type	Female N connector
Electrical protection	Yes
Polarization	Vertical & Horizontal
Wind load	180 km/h
Temperature (°C)	from -10° to 50°
Adjust type	Dipolo Gamma Match
Mastil diameter	0,030-0,045 m
Support	Included
Length	1,80 m
Weight	1,93 kg
Package dimensions	2,0 x 0,1 x 0,1 m



Vertical radiation pattern



Horizontal radiation pattern



All specifications are subject to change without notice.

