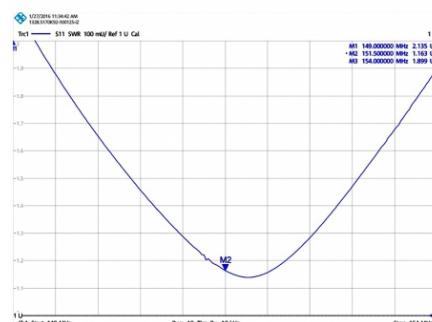
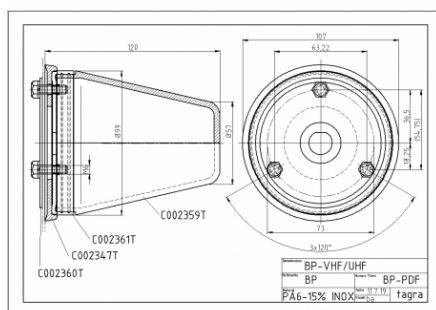



BP-VHF - ANTENNA OMNI VHF

Power	100W
Gain	1 dBd (3,15 dBi)
Impedance	50 ohm
Material	Fiber and stainless steel
Colour	White / Black
R.O.E - S.W.R - T.O.S	1,2:1
Type mounting	Surface
Connector type	Connector N(H) / TNC(H)
Polarization	Vertical
Adjust type	Adjusted
Support	Included
Length	0,12 m
Weight	0,60 kg



- Product on request
- Indicate whether the mounting is on metal surface or on glass fiber
- Indicate if you want with connector on the base or connector at the end of the cable
- Indicate the cable length

All specifications are subject to change without notice.

